

ambla®

JUNO

Patterned faux leather

Juno brings a softly patterned finish to the Ambla collection, adding subtle movement and visual depth with a refined, contemporary feel.



Its fine surface print creates a gently textured appearance that feels calm, balanced and easy to place across a scheme. More understated than a statement pattern, Juno introduces added character in a way that feels considered rather than decorative, making it well suited to interiors that benefit from a little more visual interest without losing clarity or restraint. Designed to sit comfortably across a wide range of settings, Juno offers a more expressive surface while still feeling polished, versatile and easy to specify.

PRODUCT SPECIFICATION



CRIB 5
RATING



EASY
CLEAN



SUITABLE
OUTDOORS



1,000,000
Rubs
ABRASION
PROOF



VEGAN
FRIENDLY



ANTI
MICROBIAL

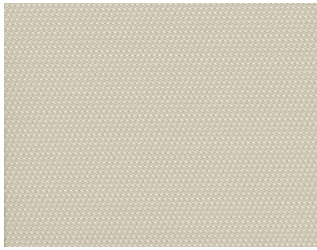


10 YEAR
WARRANTY

| | | | |
|-------------------|-------------------------------|-------------------|--------------------------------|
| Product | Patterned faux leather fabric | Flame retardancy | Crib 5 |
| Weight | 725/805gsm | Abrasion | 1,000,000 Martindale rubs |
| Width | 1370mm nominal | Fabric care | Clean with a mild, soapy water |
| Thickness | 1/1.4 +/- 1mm | Warranty | 10 years |
| Bursting strength | 840kN/m ² | Available lengths | Cut lengths, and 25m rolls |

COLOURS

The colours on this document may view differently to the actual production colours



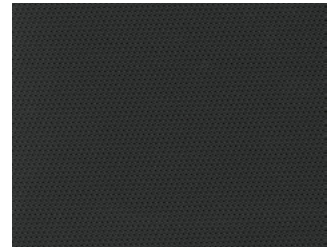
Snow White



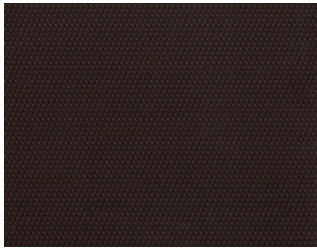
Flake



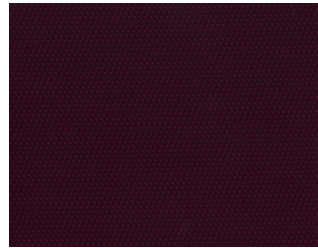
Truffle



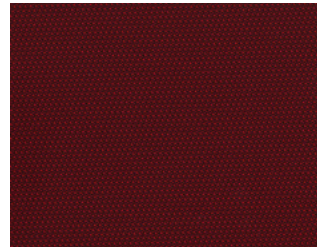
Black



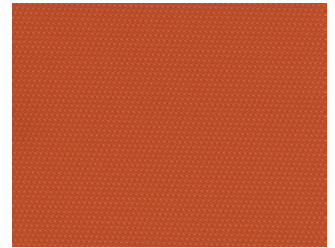
Chocolate



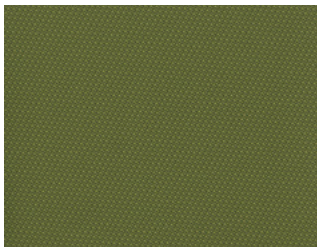
Rosehip



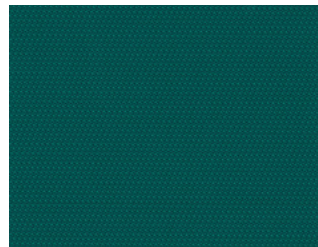
Poppy



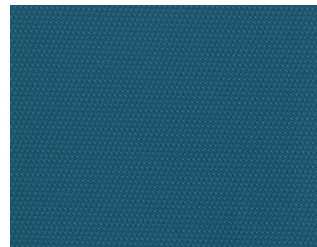
Mango



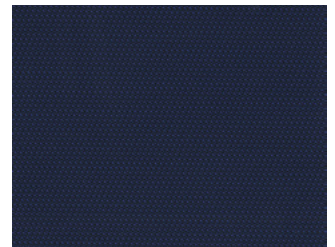
Lime



Orchid



Lapis



Cornflower

HOW TO ORDER



FABRIC SAMPLES

Individual samples are available free on our online store, or speak to our team about ordering a full sample book.



BUY ONLINE

Our online store features our complete core range, available as cut lengths or full rolls for immediate dispatch.



TRADE ACCOUNTS

For those who work with Ambla regularly, our trade accounts provide structured pricing, direct support and dependable supply.

01282 842511
sales@ambla.com

Trade accounts
ambla.com

Buy online
shop.ambla.com

ambla[®]

IMPORTANT INFORMATION

PERFORMANCE

Ambla is manufactured to meet demanding criteria such as high wear resistance, needed in public areas and commercial/contract upholstery applications.

PROTECTION

Ambla fabrics contains active ingredients that protect against the growth and spread of mould and mildew. This is not a surface treatment and therefore Ambla retains its effectiveness even after regular cleaning. Ambla resists bacterial & mould growth even after 5 years of heavy commercial use, cleaned every day (tested to ISO 846) and is ideal for environments where hygiene and cleanliness are important.

TECHNICAL INFORMATION

Tested in accordance with BS 5790 Part 1 1996 & ISO7617-1:2001. Quality systems approved to ISO 9001, IATF 16949 and MED Module D and Environmental system approved to ISO 14001.

Martindale abrasion in excess of 1 million rubs.

FLAME RETARDANCY

BS5852: 2006 Ignition Source 0 and 1 when tested in combination with CMHR35 foam.

BS5852: 2006: Clause 11 Ignition Source 5 (Crib 5) when tested in combination with CMHR35 foam.

ISO 8191-1 1987 smouldering cigarette
ISO 8191-2 1988 match flame

BS7176: 2007 for Medium Hazard applications.
BS EN 1021-1: 2006: Part 1 smouldering cigarette
BS EN 1021-2: 2006: Part 2 match flame
BS 5852 2006: Clause 11 Ignition Source 5

IMO Resolution MSC 307 (88) (2010 FTP Code): Annex 1 Part 8
FAR/JAR Part 25: App. F Part 1 (Vertical Test) / EASA CS.25.853 (Amendment 21)

CLEANING & MAINTENANCE

Ambla should be cleaned regularly to prevent build up of soiling and to retain its appearance.

Clean with a damp, soapy cloth and rinse well with clean water. Dry the surface thoroughly.

A soft brush with soapy water may be used to remove stubborn stains. Ensure surfaces are then rinsed and dried.

Disinfectants may be used in dilution as specified by their manufacturers. This includes Haz-tabs and other disinfectants commonly used in hospital infection control programmes.

Actichlor tablets should be fine as long as the manufacturers' instructions are followed.

With regard to chlorine releasing agents' levels of 1 - 10,000 parts per million should pose no problems as long as the material does not endure long soakings at the higher concentrations

Ambla surfaces are NaDCC compatible. Ensure surfaces are then rinsed with clean water and dried thoroughly.

Tests in our laboratory show that the earlier any stains are removed the better.

ABOUT US

Ambla is part of the Uniroyal Global Engineered Products Group of Companies.

+44(0)1282 842511
info@ambla.com

Uniroyal Global Limited,
West Craven Business Park,
Earby,
Lancashire, BB18 6JZ

The logo for Ambla, featuring the word "ambla" in a lowercase, bold, sans-serif font. The letter 'a' is significantly larger than the other letters, and the 'b' is also bold. The 'l' is thin and tall, and the 'a' at the end is smaller and lowercase.